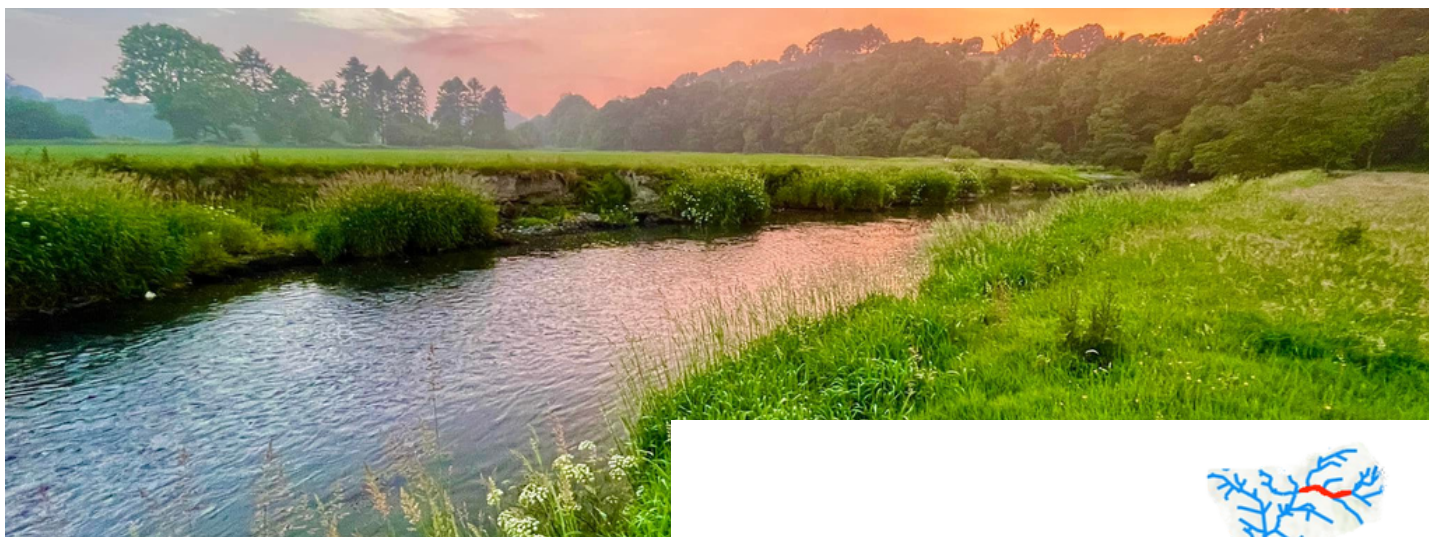




# ADOPT A TRIBUTARY SPRING NEWSLETTER

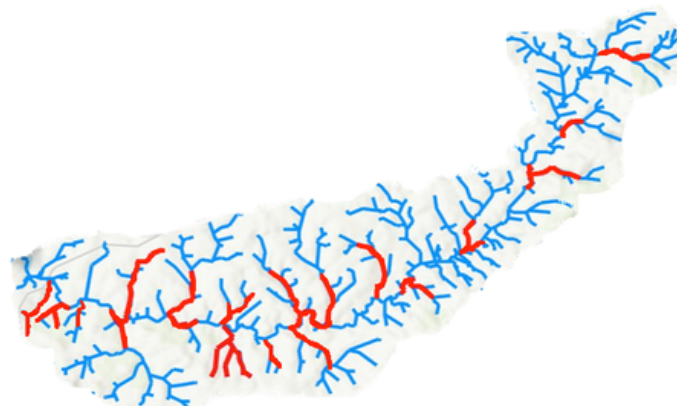
West Wales Rivers Trust



## NEW TEIFI ADOPT GROUPS

Local people have been trained & supplied with resources to visually monitor river health & habitat. Currently 13 tributaries/areas across the Teifi adopted;

- Cych, Cerdin, Plysgog, Bargoed, Nant Esgair, Duar, Teifi at Llandysul, Tyweli, Ceri, Siedi, Cwerchyr, Piliau, & Arad.



## TREE PLANTING

### - AFON MELINDWR, RHEIDOL

Adoptees & volunteers helped plant over 150 trees along 1km of riverbank. This will help provide cool clean water for years to come & numerous habitat benefits.

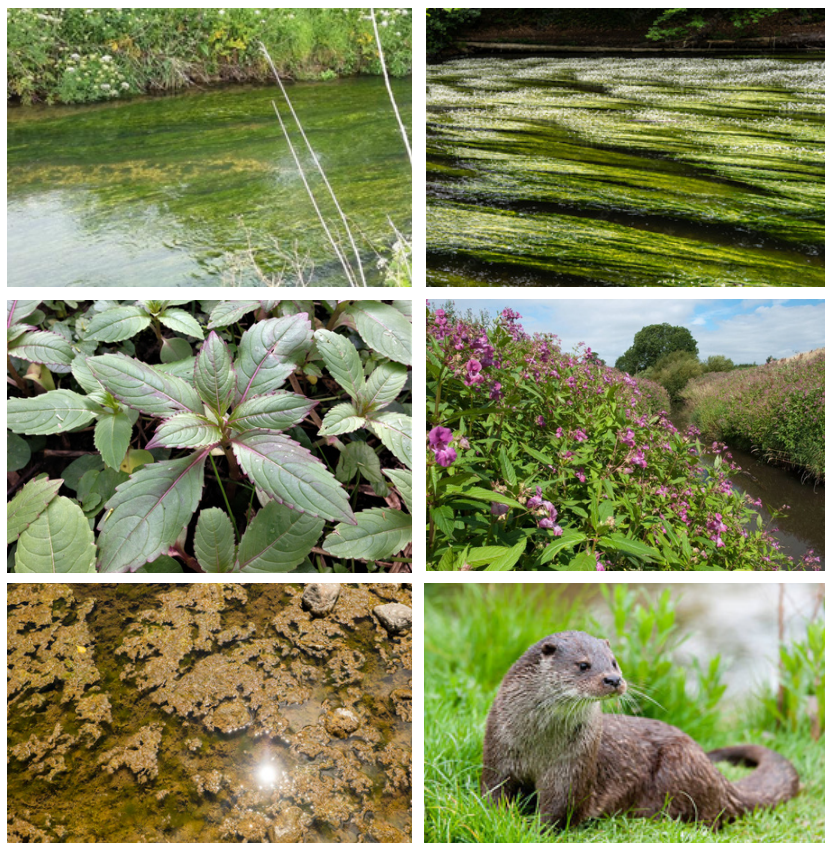
Thank you to all our volunteers for their efforts, Coed Cymru for providing trees and advice, and finally the landowners without their support it wouldn't have been possible!

## TYWI ADOPTERS INVESTIGATE ACID WATERS

Adoptees of the Doethie, an upland tributary of Afon Tywi have been investigating acid waters & assisting with the remediation, using local knowledge to identify sites & facilitate the addition of crushed lime into forestry drains to buffer & minimise the impact of acid water flushes.



# ACTIONS FOR THE COMING MONTHS



- **Map presence & spread of Water Crowfoot (*Ranunculus aquatilis*)**, and other aquatic vegetation throughout Teifi catchment using our adoptee recording app on Survey123. This is an important habitat feature of the Teifi Special Area of Conservation (SAC).
- **Map presence & spread of Himalayan Balsam & Japanese Knotweed** - invasive non-native species are putting species & habitats at risk. Their presence often goes unrecorded, making tackling the problem harder! Please record via our adoptee recording app on Survey123.
- **Recording of excessive algae growth & blooms** for sample testing by Hydro Industries to improve understanding of localised water quality issues. If you see excess algae growing along your riverbed, please email [nathaniel@westwalesrivertrust.org](mailto:nathaniel@westwalesrivertrust.org) with location details.
- **Otter recording & surveys training** - With otter consultant to contribute to Wales wide monitoring of Otter populations. 3 training session, dates TBC. If interested please contact [nathaniel@westwalesrivertrust.org](mailto:nathaniel@westwalesrivertrust.org)

## UPCOMING EVENTS

"Know your river catchment" & introduction to Adopt a Tributary.

- Llandysul Powerhouse 10th May 18:30
- Abercych Village Hall 23rd May 18:30

Balsam Bashes - Throughout June to July on Dulas at Lampeter, the largest area of Balsam in Teifi. *Once the spread of balsam is mapped in other tributaries, work can begin there!*

Outfall Safari & River Habitat Survey Day, Lampeter Coop on Monday 29th May 10:00 am.

Cenarth River Experience Day - Friday 2nd June 11:00 - 14:00 meet "Salmon Leap" car park



Have you heard of the Save the Teifi campaign? Visit their website & follow their actions via - [teifi.one/actions/](https://teifi.one/actions/)

# GUIDE TO ADOPT SURVEY APP

We are really relying on our adoptees mapping out the presence of invasive species, water quality issues, protected species and other habitat features using our Adopt a Tributary Recording app. Easy to use while out on walks!

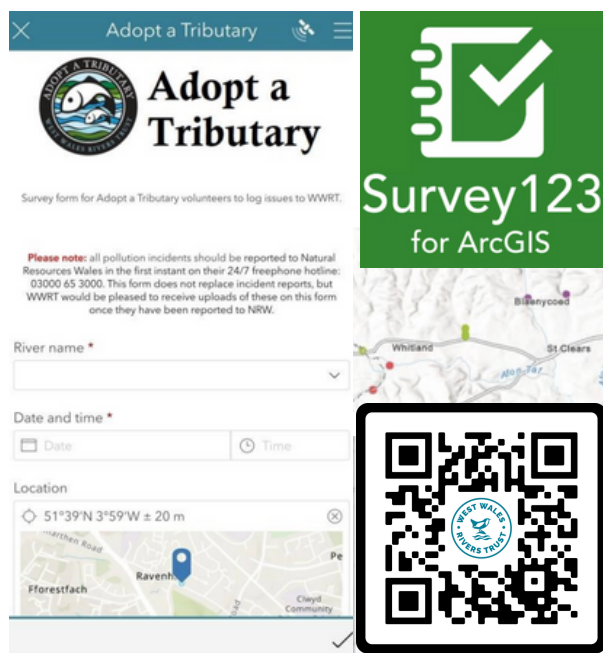
First you will need to download the **ArcGIS Survey123 Android** app from Google Play or **ArcGIS Survey 123 Apple** from the App Store (depending on your device).

You do not need to create an account or log in.

Once the app is downloaded, go to your web browser on your device and enter the following link:

<https://survey123.arcgis.app?itemID=1aa50dadba6d4ca7bb319faa46f2255a>  
or scan the QR code!

This should then open the app - click 'continue without signing in', allow permissions, and you are all set to record information in the field!



## RECENT NEWS

On 29th April West Wales Rivers Trust hosted a film night at The Powerhouse, Llandysul showing "Riverwoods" a story of restoring upland river habitat for Salmon. It was well attended and followed on from a previous screening in Lampeter during December. If you have a suitable venue for a film night in your area, get in touch!

**Plysgog Adoptees** have been walkover surveying habitat and water quality issues in their tributary. The group is growing and is taking quarterly habitat walks to map out issues throughout the catchment.

**Bargoed Adoptees** are recording signs of otter locally and identifying small feeder streams.



To adopt your local river or stream contact: [adopt@westwalesrivertrust.org](mailto:adopt@westwalesrivertrust.org)  
[westwalesrivertrust.org](http://westwalesrivertrust.org)