



Dŵr Cymru
Welsh Water

Natural Resources Wales

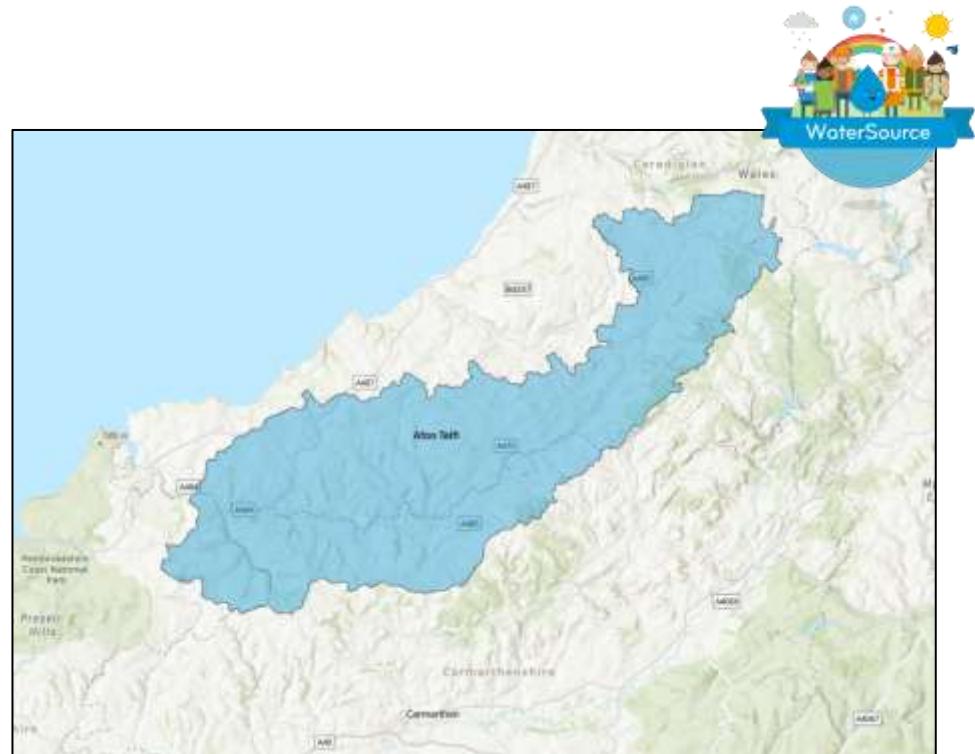
Teifi Demonstrator Project Hackathon

Tara Froggatt – Catchment Manager, Water Services

Sharon Ellwood – Head of Environmental Services, Wastewater Assets

River Teifi: Drinking Water Source

- **Catchment area:** ~907 km²
- **WTWs:** Strata Florida & Llechryd
- **Population Served:** Over 64,000
- **Multiple land uses:** varied water quality risks
- **Safeguard Zone designated in 2020:** *Bacteria, nutrients, pesticides*
- Catchment management projects in delivery **since 2014**
- Included in **AMP8** NEP for enhancing & building initiatives
- Limited land ownership





PestSmart (2014 – ongoing)

- Stakeholder engagement in catchment since 2014
- Developed the Wales Pesticide Partnership
- Weed Wiper Hire Trial ran 2015-2019
- Pan-Wales Pesticide Disposal Scheme (2017-2021)
- *Be PestSmart* campaign for gardeners & homeowners

NRW's 4Rivers for LIFE Project (2022-2027):

- Include WaterSource messaging in comms materials and
- Joint promotion of project at local shows & events
- Aligning best practice land management to deliver schemes that provide multi benefits e.g. INNS management in SgZ

***WaterSource* Engagement Campaign:**

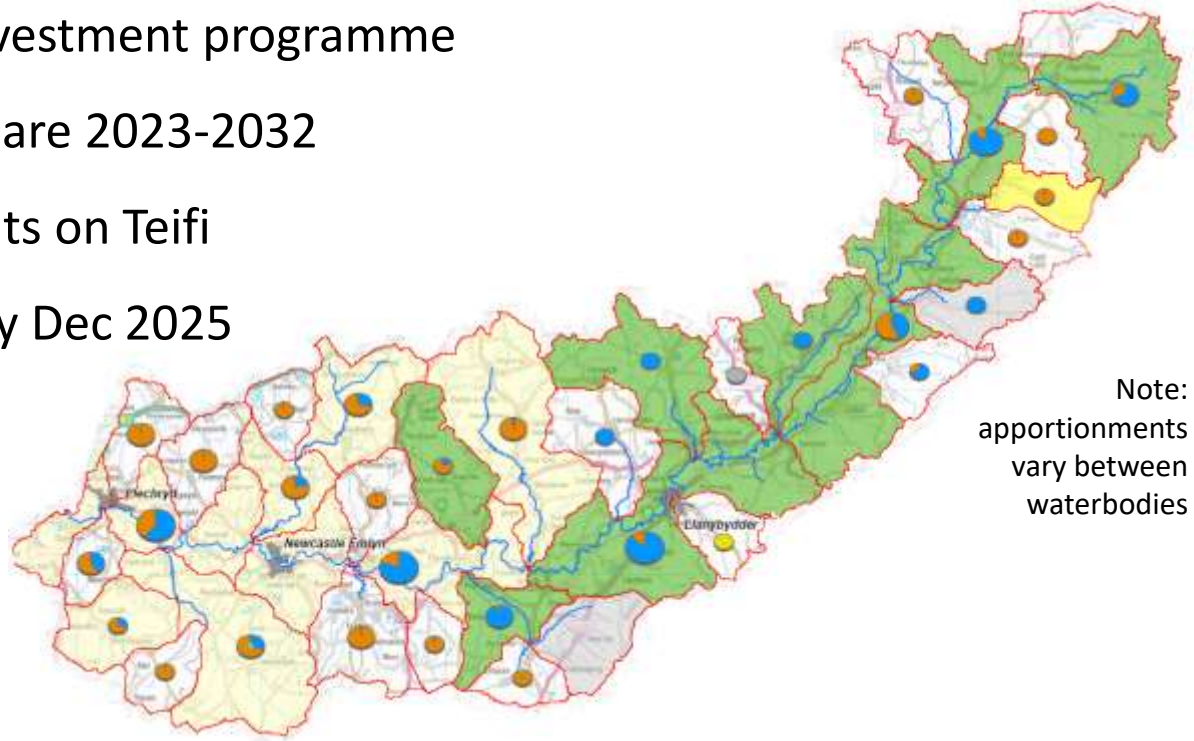
- New community engagement project with Women's Institute groups

Afon Teifi: AMP8 Proposed Activities



Risk Evaluation	Smart Catchments	Research & Innovation	Partnerships & Engagement	Mitigation & New Ways of Working
<i>Understand challenges to raw water quality through regulatory monitoring, catchment knowledge and DWSPs</i>	<i>Develop a 'Digital Twin' for prediction of raw water deteriorations for abstraction management and WTW optimisation</i>	<i>Support cutting edge science to understand how we can better manage the causes of water quality changes which impact Customer Acceptability</i>	<i>Collaborate with partners and communities to raise awareness of the importance of safeguarding drinking water supplies</i>	<i>Co-design solutions with our key stakeholders which will deliver multiple benefits for water, the environment, and people.</i>

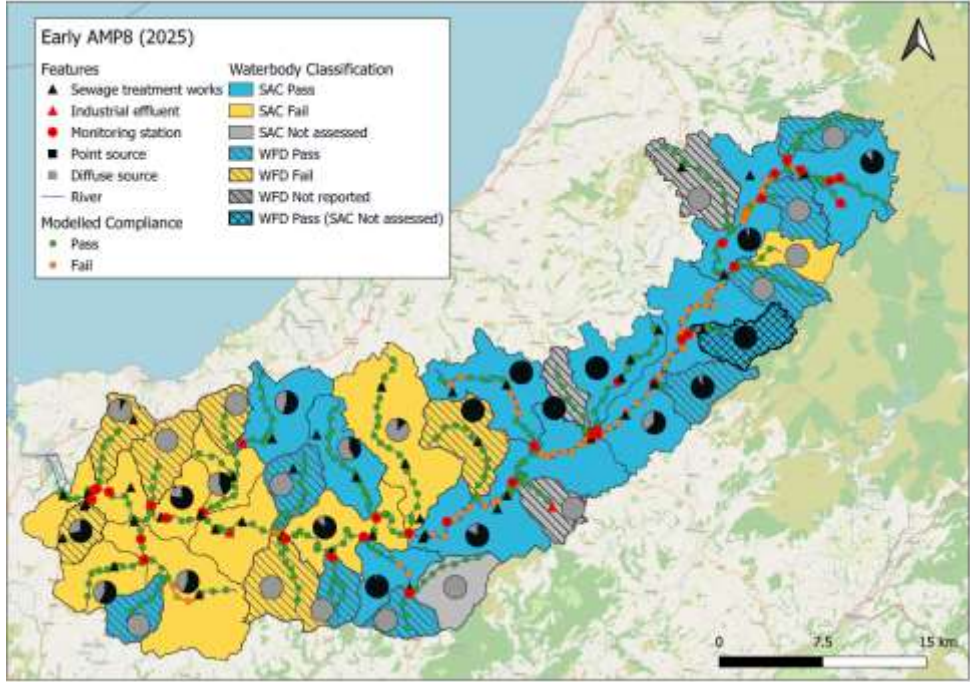
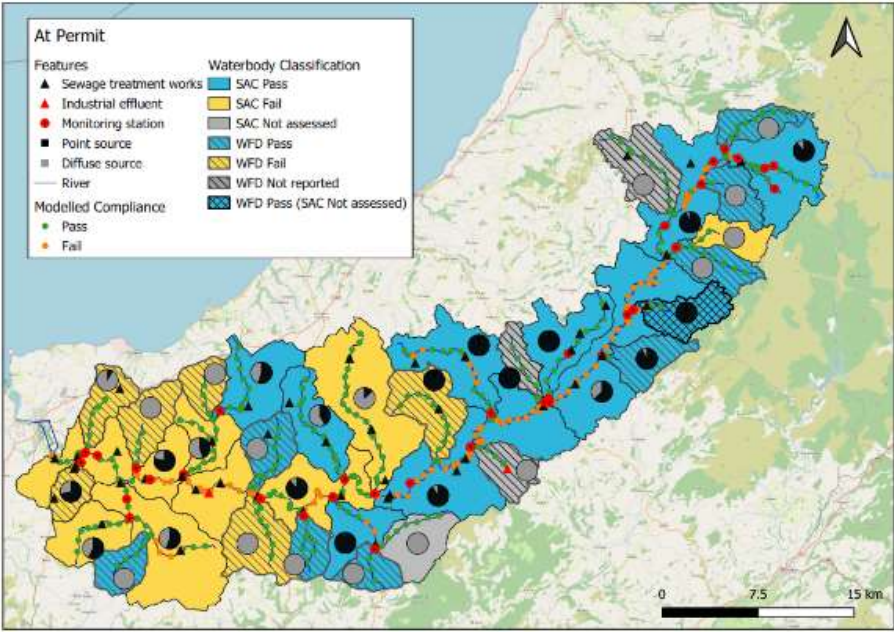
- SAGIS informs DCWW investment programme
 - DCWW to address fair share 2023-2032
 - 28 new/tightening permits on Teifi
 - 2 accelerated schemes by Dec 2025
 - Lampeter WwTW
 - Llanybydder WwTW
 - NRW RoP & PR24
- Ofwat determination underway
- £42m+ PR24 for Teifi catchment



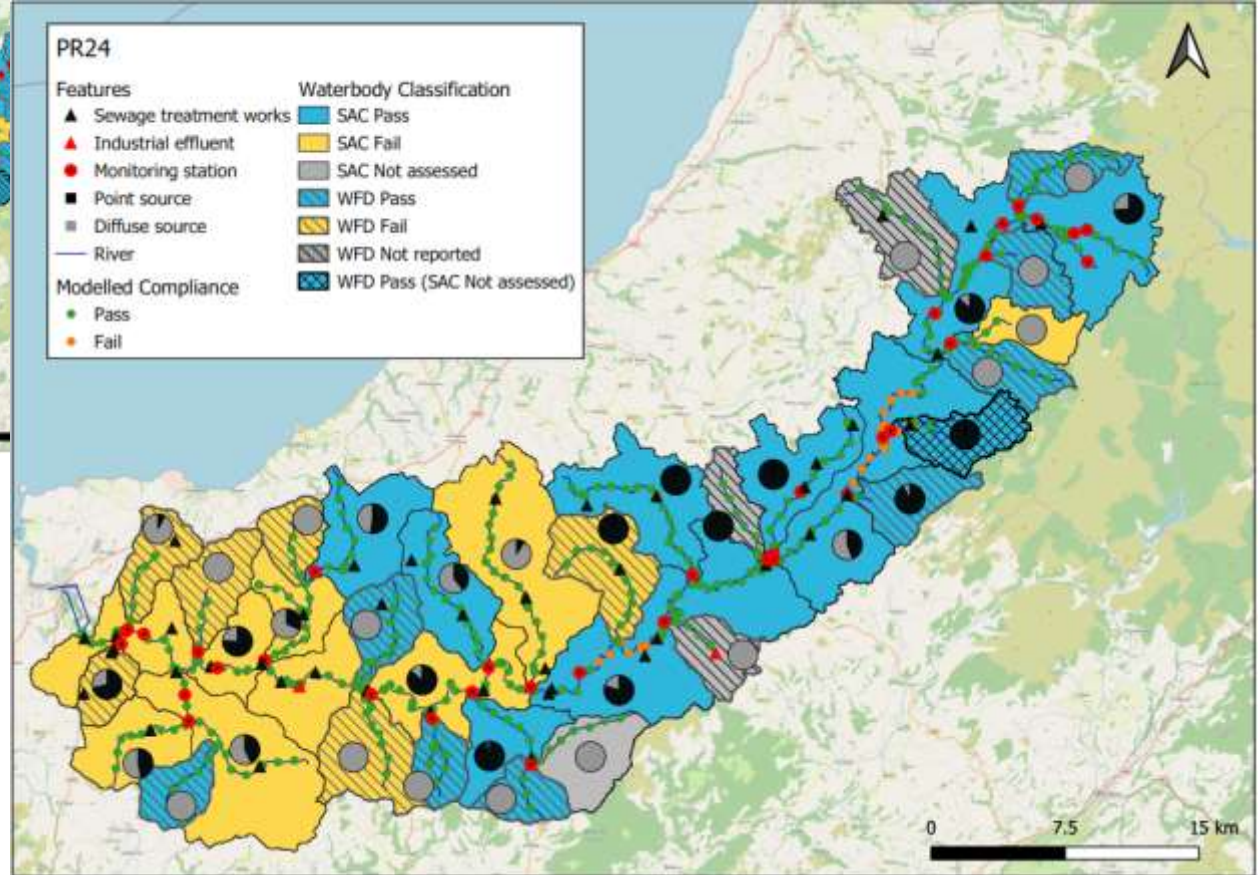
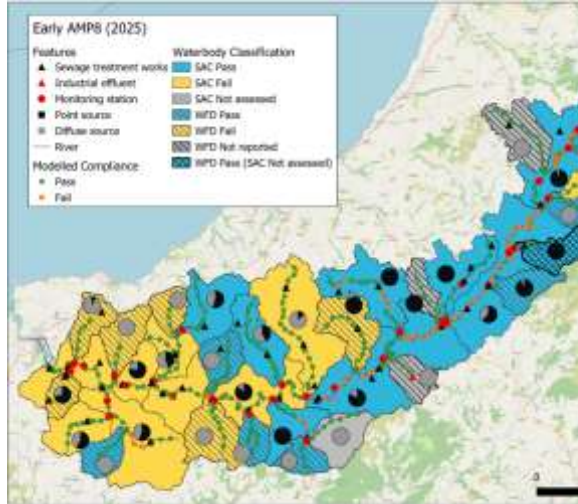
Note:
apportionments
vary between
waterbodies



Impact of DCWW fair share on phosphorus



Impact of DCWW fair share on phosphorus



How can we achieve more? Together.

Now



Afon Teifi
Working
Group



Teifi Project
Officer to help
facilitate
opportunities

4

4R4Life



Support Ofwat bid
for NRW demo
project



NMB, TAG,
stakeholder
group members



Develop scope for
live monitoring
programme



Ammonia
backstops



Next?



Consider (11)
activities of NRW
demo project



Source to sea
approach



Continue to explore
catchment permitting



Seeking support to trial
innovative technologies
in the catchment



Review
modelling
scenarios



Re-screen
collaborative
opportunity
sites for NMBs